



# GMT MONTHLY MEMBERSHIP PROGRESS REPORT

Results as of: 1/31/2017

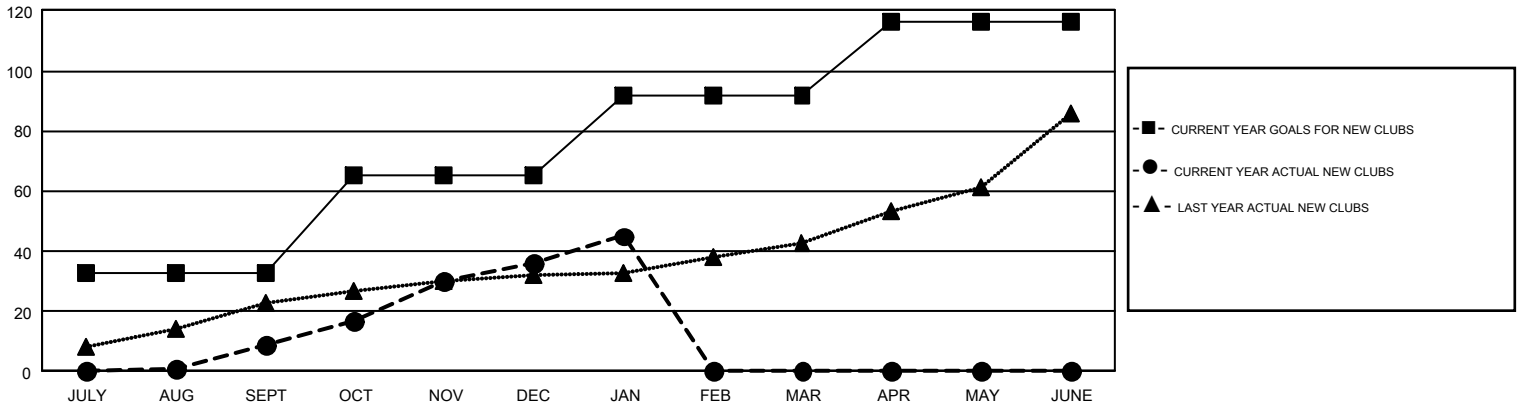
## GMT Constitutional Area 6-Africa

REPORT DOES NOT INCLUDE CLUBS IN UNDISTRICTED AREAS.

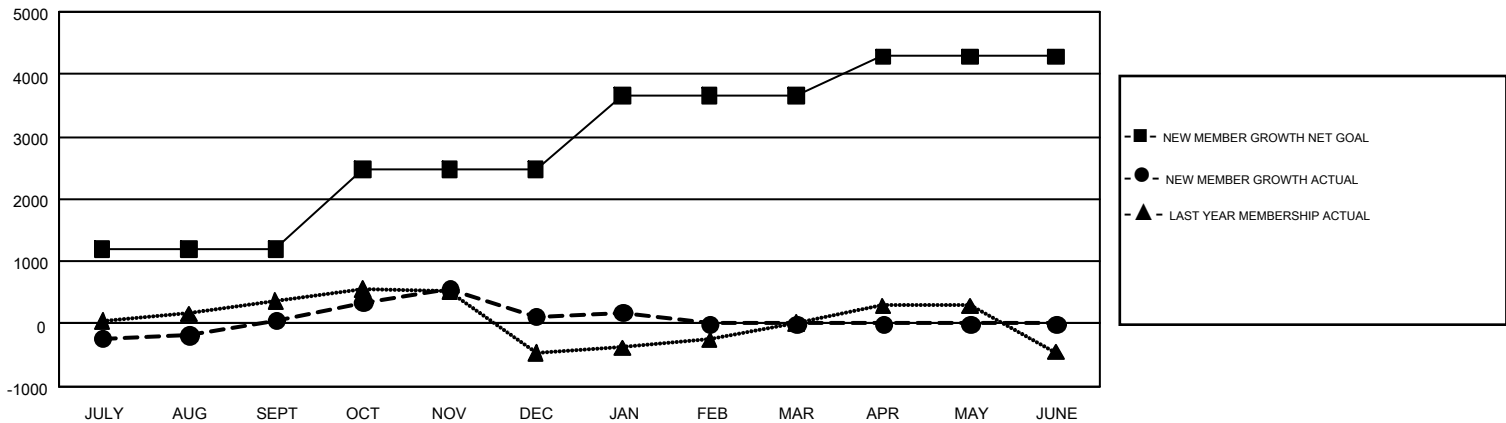
Clubs			
RESULTS FOR 2016-2017			
QUARTER	NEW CLUB GOAL	NEW CLUBS	DROPPED CLUBS
JULY/AUG/SEPT	33	9	7
OCT/NOV/DEC	32	27	18
JAN/FEB/MAR	27	9	23
APR/MAY/JUNE	24	0	0

Members			
RESULTS FOR 2016-2017			
QUARTER	NEW MEMBER GROWTH NET GOAL (not reinstated or transfers)	NEW MEMBER GROWTH ACTUAL (not reinstated or transfers)	DROPPED MEMBERS ACTUAL (including transfers)
JULY/AUG/SEPT	1,193	947	890
OCT/NOV/DEC	1,277	1,737	1,675
JAN/FEB/MAR	1,186	780	715
APR/MAY/JUNE	626	0	0

GOALS AND ACTUAL NEW CLUBS CUMULATIVE



GOALS AND ACTUAL MEMBERS CUMULATIVE



DROPPED CLUBS: 48	656 CLUBS OF 1,320 ADDED 1 OR MORE NEW MEMBERS	<u>GENDER DISTRIBUTION</u>	
DROPPED MEMBERS		MALE	17,963 (62.75%)
DECEASED	87	FEMALE	10,665 (37.25%)
CLUB CANCELLED	884	TOTAL FAMILY UNIT MEMBERS	3,269
OTHER	2,306	FAMILY MEMBERS PAYING HALF DUES	1,759
TOTAL	3,277		

[CLICK HERE FOR CUMULATIVE MEMBERSHIP DATA](#)